

now

News & Newsletters

About Visix

- ▶ News & Newsletters
 - ▶ Articles
 - ▶ Newsletter Archives
- ▶ Press Room
- ▶ Careers
- ▶ Contacts
- ▶ Privacy Policy
- ▶ Copyright

Newsletter Archives

Configuring Screen Layouts: Step by Step

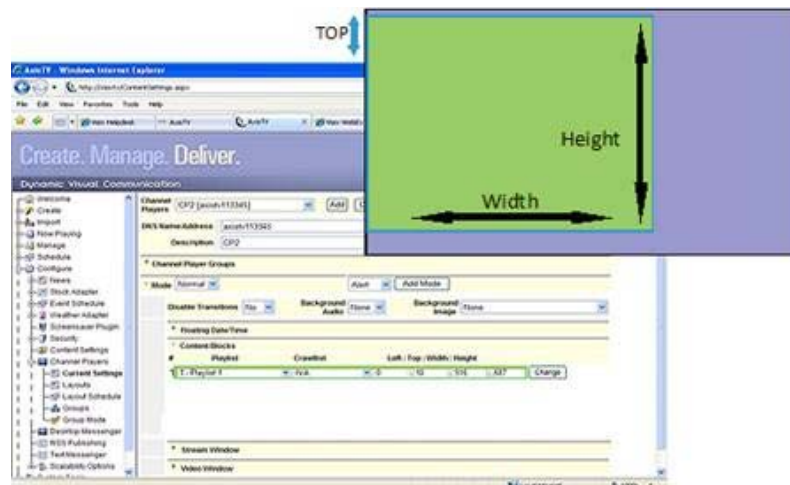
"To design is to communicate clearly by whatever means you can control or master"
- Milton Glaser, graphic designer

Creating eye-catching bulletins and other content is just the first step in communicating to your audience. You also have to consider each item's place in the overall layout. Creating a comprehensive, pleasing look is a vital step to take before publishing to your displays.

Should you have one window or three? Should there be a crawl list or ticker? How does it all look together? Using AxisTV's simple tools, laying out your content blocks is easy. Follow these simple steps and master your visual communications.

Creating Content Blocks:

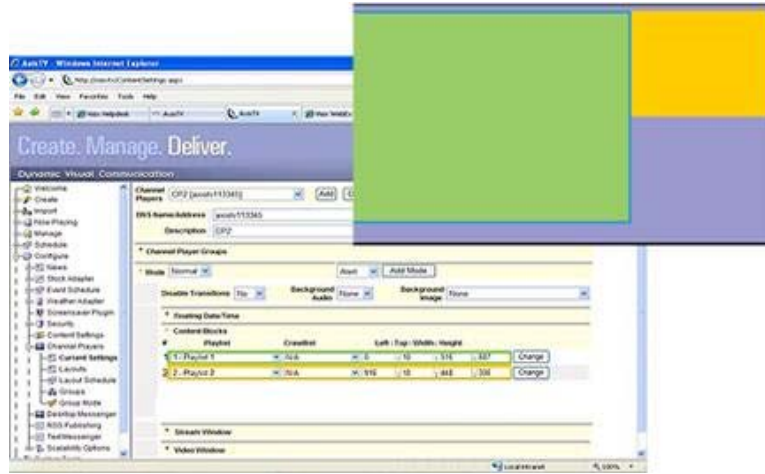
- The screen is divided into content blocks. Each content block contains a playlist or a crawl list (ticker).
- The screen is measured in pixels. For example, a display that has a resolution of 1366 X 768 is 1366 pixels wide and 768 pixels high.
- Each content block should be configured to populate a certain area on the screen.
- In the picture below, Playlist 1 is selected to play in Content Block 1 (green).
- To designate the location of Content Block 1, first decide the number of pixels from the far left of the screen the content block will begin. Enter this number into the "Left:" field. In the picture below, the Left coordinate will be 0 because the content block starts at the far left edge of the display.
- Next, enter the number of pixels from the top you want the content block to begin. In the picture below, Content Block 1 will begin 10 pixels from the top. Enter 10 in the "Top:" field.
- Now, tell Axis TV the Width of the content block, in pixels. In the picture below, the width of Content Block 1 is 916 pixels; enter 916 in the "Width:" field.
- Finally, enter the desired height of content block in the "Height:" field. The height of this content block is 687 pixels.
- Click on "Change" after entering all coordinates for Content Block 1. You must click on Change for each row you change, and can only change or add one row at a time.



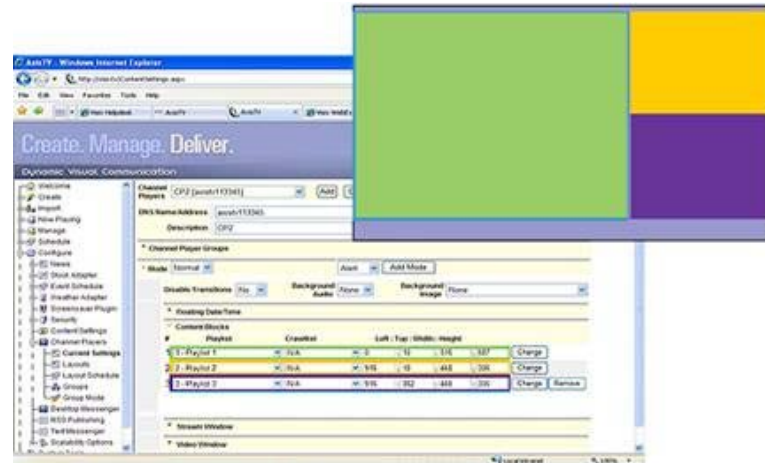
Repeat this process for Content Block 2 (orange).

- Select the playlist you wish to play in Content Block 2.
- Enter the coordinates Left: Top: Width: Height.
- Because you are adding a new content block, click "Add" when you finish to save your changes before moving on to the next row.

In the example below, Content Block 2 will show Playlist 2 and will begin at 916 pixels from the far Left of the screen because it will begin where Content Block 1 ends. It will start 10 pixels from the top, the same as Content Block 1, but because it is a smaller block, you see the width and height will be less than Content Block 1.



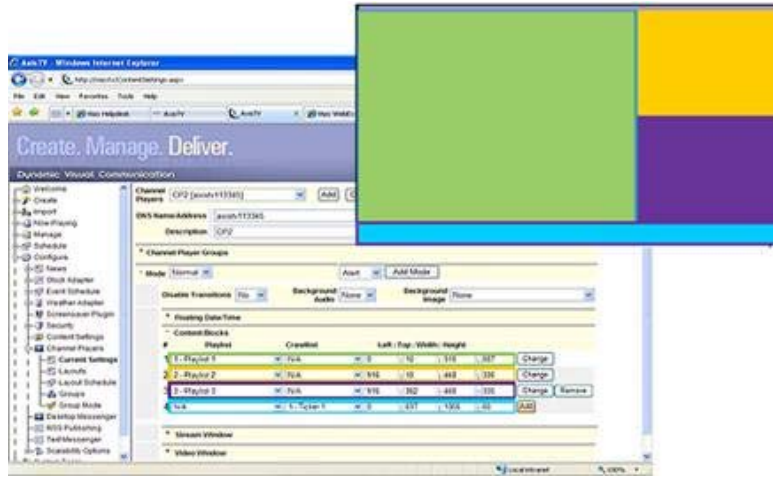
Repeat the process for Content Block 3 (purple). See below.



To add a CrawlList or a Ticker:

Instead of selecting a playlist from the Playlist Field, leave that field at "N/A" and select a ticker from the CrawlList field. In the picture below, we have selected Ticker 1 to play in Content Block 4 (bright blue).

You can see that our CrawlList will start at the far left edge of the screen and continue for the entire width of the screen, which is 1366 pixels, but it will only be 60 pixels in height.



Copyright 2008. Visix, Inc. All rights reserved.